

# Thurnham Keep

Luxury bed & breakfast accommodation near Leeds Castle, Maidstone, Kent



There's no doubt, Thurnham Keep is one of the most special places to stay in the South of England and our aim is to ensure your stay is a happy and memorable experience. Located 3 miles from Maidstone in an area of outstanding natural beauty on the ancient Pilgrims Way with its Chaucerian associations, the house sits just below the site of Thurnham Castle and the crest of the North Downs. This beautiful Edwardian country house, surrounded by 7 acres of gardens, enjoys stunning views out over the Kent countryside and the Weald. Yet, it is easy to access being 5 minutes from the M20, 10 minutes from the M2, 2 minutes from Bearsted station or 20 minutes from the Eurostar service at Ashford International station.

Our little hamlet of Thurnham comprises the Black Horse Pub, renowned for its good food and conveniently situated at the bottom of our drive, the ancient church of St Mary's, the ruins of Thurnham Castle, Cobham Manor Riding Stables and a scattering of houses.



Thurnham Keep B&B, Castle Hill, Thurnham  
Near Maidstone, Kent ME14 3LE  
Tel: 01622 734149 or 07906 399380  
Email: [info@thurnhamkeep.co.uk](mailto:info@thurnhamkeep.co.uk)  
Website: <http://www.thurnhamkeep.co.uk>

# Thurnham Keep

Luxury bed & breakfast accommodation near Leeds Castle, Maidstone, Kent

We are fortunate to have two neighbouring villages, Detling and Bearsted, each approximately one mile away. Bearsted is particularly picturesque, famous for its ancient village green upon which cricket is still played throughout the season.

Whether your stay with us is for business or pleasure we can promise you a unique experience, from the moment you sweep through the gates, pass the Lodge and meander up the main driveway to the house, you will be enthralled and extremely well looked after by your hosts, Amanda and Mark.

Relax in the cosy oak-panelled sitting room with its wood burning stove roaring away during the winter months - ideal after a country walk - or in the comfy conservatory during the summer after perhaps a game of tennis, croquet or a swim.

We only use three rooms for guests, each room being light and airy and retaining all the fine features you would expect to find in an Edwardian country house with breathtaking views over the gardens and countryside beyond. Two of the en-suite bathrooms still have huge Edwardian porcelain baths in the centre of the room complete with servant buzzers on the adjoining wall. (The Butler's Pantry remains as it was but unfortunately the butler left a long time ago - so don't expect any response when rung!)



But, nonetheless, every effort has been made to ensure our guests comfort, from the soft carpets underfoot to the hand-sprung mattresses and Egyptian cotton sheets on the sumptuous antique beds. We feel that the rooms combine today's comforts - colour television, CD player, radio alarm, beverage facilities, hairdryers and bathrobes - with the elegance and charm of a bygone age.

Prices (including breakfast) from £105 per night for a double room with en-suite bathroom. Corporate rates are available as are discounts for longer stays.

Thurnham Keep B&B, Castle Hill, Thurnham  
Near Maidstone, Kent ME14 3LE  
Tel: 01622 734149 or 07906 399380  
Email: [info@thurnhamkeep.co.uk](mailto:info@thurnhamkeep.co.uk)  
Website: <http://www.thurnhamkeep.co.uk>

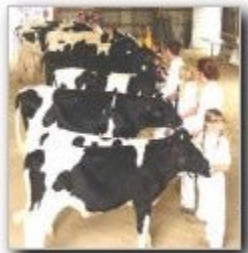
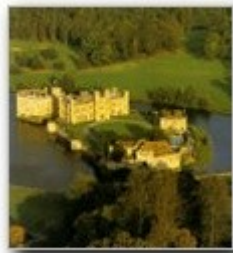
# Thurnham Keep

**Luxury bed & breakfast accommodation near Leeds Castle, Maidstone, Kent**

Breakfast is served in the Morning Room, a lovely sunny room overlooking the gardens, or in summer can be taken outside on the terrace. A traditional English breakfast or continental are a couple of options, but the menu is varied and flexible to meet guests needs. When possible we try to offer whatever is in season from our kitchen garden (where we grow 20 different types of fruit), honey from our hives, Mark's home-made jam (to die for) and eggs from our free range chickens when obliging. In the evening a kitchen supper can be provided with prior notice or we can direct you to several excellent nearby pubs and restaurants.



The gardens at Thurnham were expertly landscaped nearly 100 years ago into a series of terraces. To one side of the terrace lies a large, heated swimming pool surrounded by lavender hedging and a wall resplendent with grapevines for shelter. Laze on a sun-lounger with a book to soak up the ambience or take a dip. To the east of the house is a hard tennis court, overlooked by a summer house, interestingly formed from an old 1920's tram and having a tiled roof. Beyond lies a circular brick-built well house with a conical roof which contains a dovecot. There's a croquet lawn, a variety of ponds with water features and lilies, wonderful borders brimming with shrubs and flowers, many superb trees and a walled kitchen garden. Please feel free to wander around, use the facilities and enjoy the garden as we do.



**Thurnham Keep adopts a no smoking policy**

Thurnham Keep B&B, Castle Hill, Thurnham  
Near Maidstone, Kent ME14 3LE  
Tel: 01622 734149 or 07906 399380  
Email: [info@thurnhamkeep.co.uk](mailto:info@thurnhamkeep.co.uk)  
Website: <http://www.thurnhamkeep.co.uk>

# Thurnham Keep

**Luxury bed & breakfast accommodation near Leeds Castle, Maidstone, Kent**

The house, with its Jacobean-style frontage, looks far older than it actually is but is typical of Edwardian eccentricity and grandeur. Commissioned by a Quaker Lady (hence the chapel), the house was built to extremely high standards. Only the finest materials were used in the construction - Bath stone, York stone and knapped flint-work provide the framework whilst marble and oak parquet floors, fine plaster mouldings and panelled walls adorn the interior. It's believed that the flints were gathered from the crumbling ruins of Thurnham Castle and that is how the house acquired its name.

During WW11 the house was requisitioned by the RAF, who used the main house as a convalescence home for wounded aircrew from Detling Aerodrome, and its cellars used for storing important documents. In the event of the house being bombed a tunnel was constructed from the cellars into the North Downs as an escape route but fortunately it was not needed. It still remains today although blocked off at the far end and has provided much entertainment for the children since the war years.

Thurnham Keep has always been and still is a much loved family home. Four families had previously lived here before I came to live at Thurnham as a child in the early 1970's when my parents bought Thurnham Keep at auction, being the principal residence of the Thurnham Keep Estate. It goes without saying that I had a wonderful childhood here, married Mark in St Mary's, Thurnham then shortly after moved to Buckinghamshire. In 1997 when, due to ill health, my father put the house up for sale, we decided to buy it and move back here with our family. Since that time I have decorated and furnished the rooms myself whilst Mark has worked tirelessly in the gardens during the weekends. A true labour of love but very rewarding and it's wonderful to be home!



## Directions to Thurnham Keep

From M20 Junction 7, follow signs to Maidstone. After approx. 500 yards, bear left at the roundabout, signposted Bearsted. After approx. another 500 yards, bear left towards Bearsted Green. After approx. 1 and a half miles, you will reach a small parade of shops by Bearsted Green. Turn sharp left into Thurnham Lane just before the shops. Continue on this road for approx. a mile and a half until you come to a crossroads. The Black Horse public house is on your left, go straight over the crossroads and take the first entrance on your right.

Thurnham Keep B&B, Castle Hill, Thurnham  
Near Maidstone, Kent ME14 3LE  
Tel: 01622 734149 or 07906 399380  
Email: [info@thurnhamkeep.co.uk](mailto:info@thurnhamkeep.co.uk)  
Website: <http://www.thurnhamkeep.co.uk>

# Thurnham Keep

Luxury bed & breakfast accommodation near Leeds Castle, Maidstone, Kent

## Local Attractions

[Leeds Castle](#) - 'the loveliest castle in the world' (hot air ballooning, golf, both pop and classical concerts are just some of the extra attractions here)

[The North Downs Way](#) - just behind the house. The views are amazing, not to be missed and our two resident black Labradors will always take you for a walk!

[Kent County Showground](#) - various events are held here throughout the year, the major antique fairs and gardening shows have become very popular.

[The White Horse Woods](#) - enjoy walks and the remains of Thurnham Castle

[Cobham Manor Riding Stables](#) - internationally renowned riding school

Numerous [National Trust Properties](#) are to be found in Kent, the nearest ones being:-

[Chartwell](#) - Sir Winston Churchill's home

[Ightham Mote](#) - medieval manor house dating from 1330

[Knole](#) - one of England's greatest houses

[Sissinghurst Castle and Gardens](#) - one of the world's most celebrated gardens and home to Vita Sackville-West and Sir Harold Nicholson

[Smallhythe Place](#) - home of the enchanting actress, Ellen Terry

[Hever Castle and Gardens](#) - childhood home of Anne Boleyn

[Groombridge Place Gardens](#) and [Great Dixter](#) are two other wonderful gardens to visit

[Canterbury](#) - a medieval city, famous for its cathedral where pilgrims have travelled from London to since 1170 is a 20 minute drive away

[The Weald of Kent](#) - comprises many picturesque villages filled with beautiful houses and countryside, interesting shops, real country pubs and delicious tea shops - not to be missed.

[Whitstable](#) - head to the coast and visit this traditional English seaside town with a strong maritime history, a working harbour, fish market and a wealth of seafood restaurants.

The many nearby attractions in the area include the remains of [Thurnham Castle](#), [The White Horse Woods Project](#), walking the [North Downs Way](#), the [Kent County Show Ground](#), [Leeds Castle](#), [Cobham Manor riding stables](#) or why not head down to the coast - It only takes half an hour to get to [Whitstable](#).

Thurnham Keep B&B, Castle Hill, Thurnham  
Near Maidstone, Kent ME14 3LE  
Tel: 01622 734149 or 07906 399380  
Email: [info@thurnhamkeep.co.uk](mailto:info@thurnhamkeep.co.uk)  
Website: <http://www.thurnhamkeep.co.uk>